

Work Package 3: Mapping of CRM Landscape

Mapping
current substitution
technologies and initiatives



Policy
recommendations



Prioritisation
of applications under threat



Networking
of the substitution
stakeholder community



Roadmap
for critical raw materials substitution



WP3 Leader
Luis Tercero
Fraunhofer ISI
luis.tercero@isi.fraunhofer.de

Goals of Work Package 3

Provide overview of CRM and related technologies suitable for substitution efforts

Chart and monitor the policy landscape regarding CRM substitution in the EU

Provide analysis of status quo regarding substitution of CRM in the EU

WP3.1 – CRM and related industry sectors

Overview of CRM current substitutability

Considering that

- Substitutability is a very difficult thing to assess
 - Fragmented and incomplete
 - Necessarily a snapshot – no timeline
 - Little detail on the nature of the limitations of substitutes
 - Economic
 - Technological
 - Availability

Intended work

- Create overview of current substitutability for CRM
- Want to know and systematize
 - In what sectors CRMs are used
 - In what applications in those sectors
 - For what reasons in those applications
 - What alternatives there currently are (material or technology/product)
 - What the relative merits of those alternatives are
 - What possible alternatives may become available in the future



Key partners behind D3.1 & D3.3



ISI



Accessing the results of Work Package 3

- D3.3 freely available online
- Report open for feedback until August 2014



CRM_InnoNet
Substitution of Critical Raw Materials



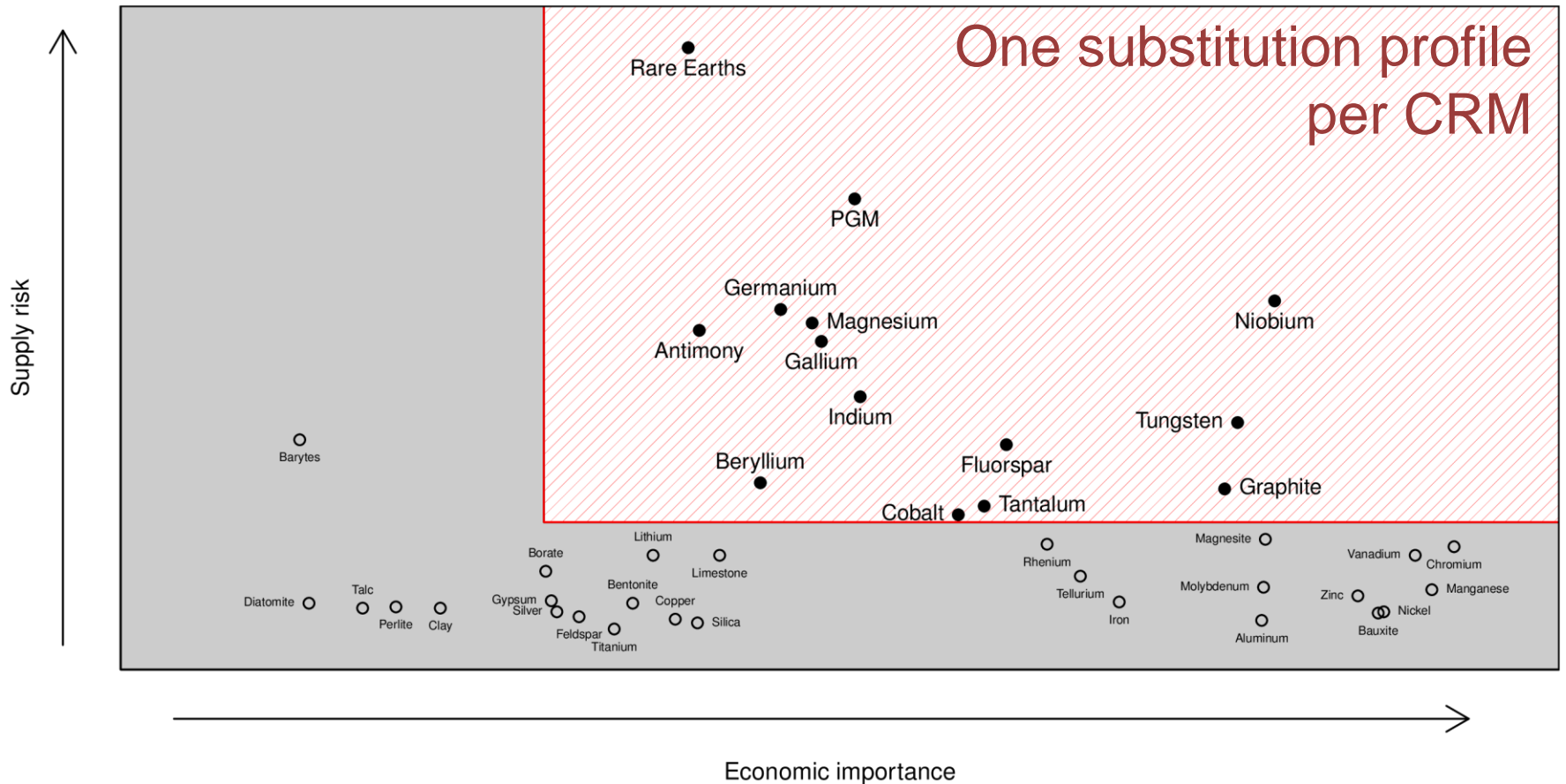
Deliverable report

D3.3 Raw material profiles

September 2013



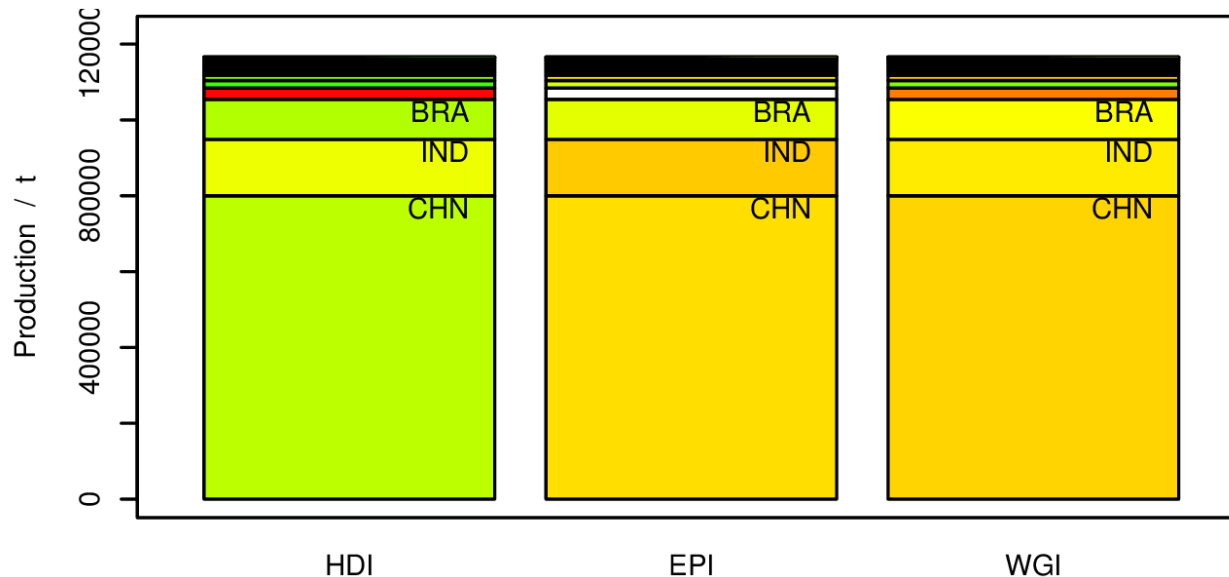
Scope of D3.3



Ad-hoc Working Group on defining Critical Raw Materials (2010): Critical Raw Materials for the EU

D3.3: Background information on production

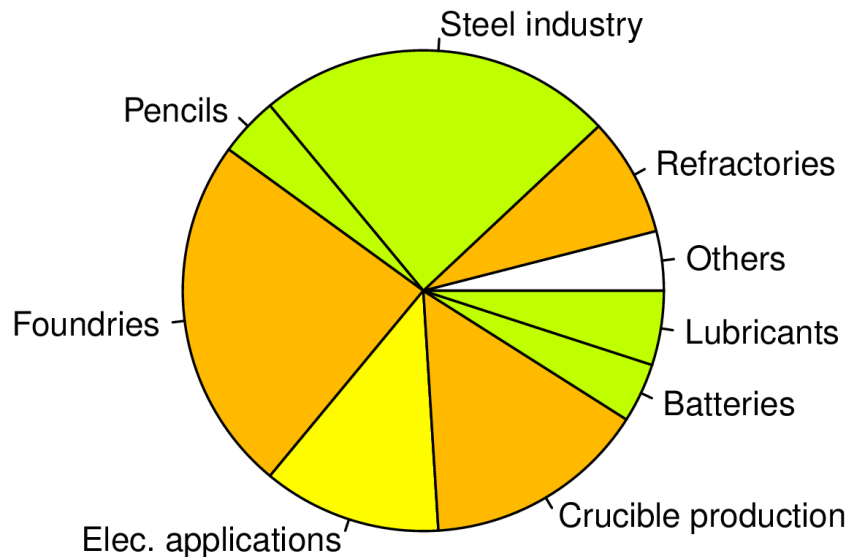
- Basic information on mining/refining (e.g. main product, by-product)
- Concentration of production at country level
- Information on producing countries (social, governance, environmental)



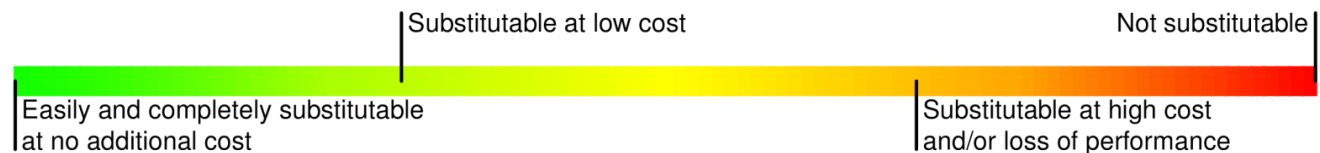
Natural
graphite

D3.3: Background information on demand

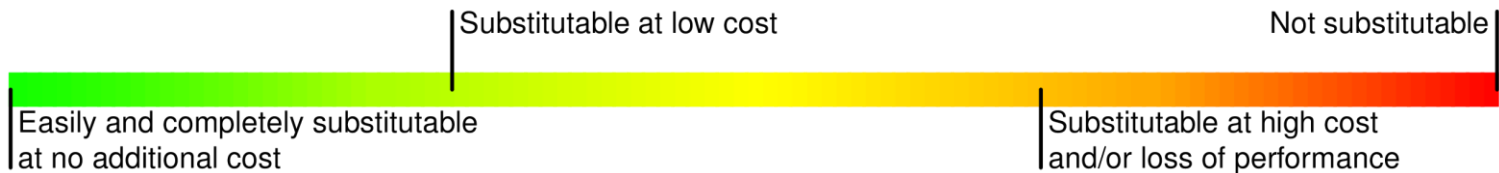
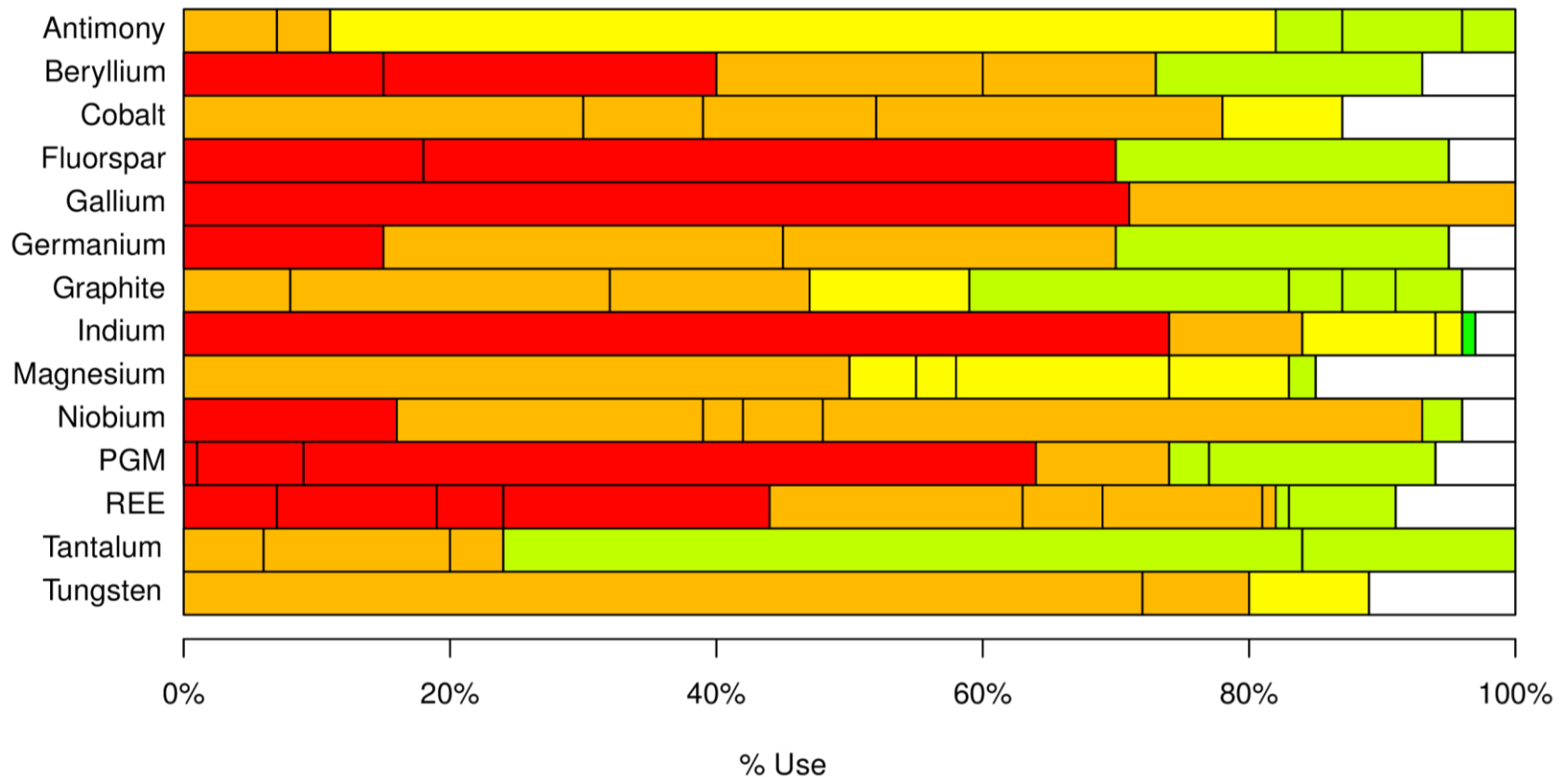
- What is the raw material used for and why?
- Are there alternative materials or technologies? What are their relative merits?



Natural graphite



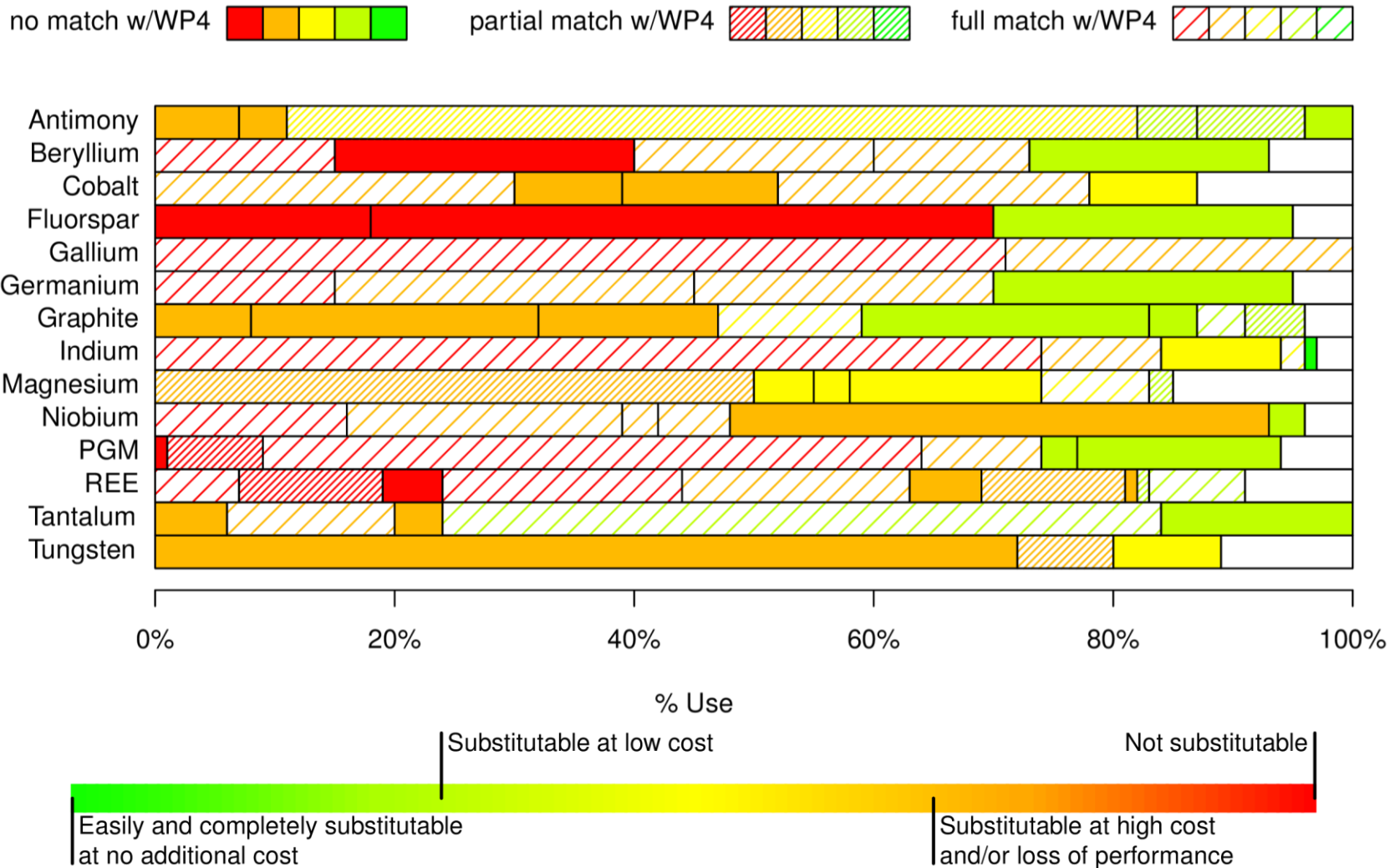
D3.3: Summary of findings



D3.3: Complementing WP4 (I)

- WP3 cover all uses of a raw material
- Some scope overlap with WP4 work inevitable
- Double-work avoided partly by approach and partly through “personal redundancy”
- Necessarily different levels of detail

D3.3: Complementing WP4 (II)



Upcoming work

- Edit D3.3 following public comments (open until Aug 2014)
- Map policy initiatives relevant to CRM substitution
 - Country profiles
- Results of technology and policy mapping to inform policy recommendations

Work Package 3: Mapping of CRM Landscape

Mapping
current substitution
technologies and initiatives



Policy
recommendations



Prioritisation
of applications under threat



Networking
of the substitution
stakeholder community



Roadmap
for critical raw materials substitution



WP3 Leader
Luis Tercero
Fraunhofer ISI
luis.tercero@isi.fraunhofer.de